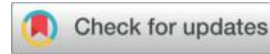


Revista de Literatura,  
ISSN : 0034-849X ; eISSN: 1988-4192,  
Publisher: CSIC Consejo Superior de Investigaciones  
Cientificas  
Spain  
<https://revistas-csic-es.com/literatura/>  
Volume 1-Issue 1-(2025)

# Securing Local Community Economic Rights: Study in Both Indonesia-Malaysia Border Lands



Sunarno

Assoc. Prof of Agrarian Law at Universitas Muhammadiyah Yogyakarta, Indonesia

[sunarno@umy.ac.id](mailto:sunarno@umy.ac.id)

## Abstract

As global property investment grows, countries like Indonesia have opened their markets to foreign capital, aiming to boost foreign exchange. However, this has led to challenges in protecting local community rights and economic access, particularly near borders like those with Malaysia. This research investigates two main issues, namely the adequacy of current regulations protecting local economic rights in land commercialization and the effectiveness of these regulations in practice. Utilizing library research, case studies, and legal analysis, the study reveals that while the volume of land laws has increased, their quality in safeguarding local communities has diminished. Key obstacles include insufficient local involvement and capacity in land management. The research concludes that effective legislation reform and policy development must prioritize local community interests and participation to ensure equitable economic access and mitigate potential imbalances caused by large-scale foreign investments.

## Keywords

Economic rights, land investment, local community, State borders, strategic factors.

---

### Corresponding author:

Sunarno, Head of Law Study Program, Faculty of Law, Universitas Muhammadiyah Yogyakarta, Indonesia.  
Email:[sunarno@umy.ac.id](mailto:sunarno@umy.ac.id)

## Introduction

Land policy and strategic system around the state borders in Pontianak has the potential to generate considerable earnings for Indonesia,<sup>1</sup> especially in locations with abundant natural and cultural resources. Indonesia has many untapped natural resources, including agriculture, mining, and tourism. To meet development goals, the tourist sector needs tourism-related products.<sup>2</sup> Tourism development is always linked to the preservation of personality values and national culture by utilising all the potential for beauty, natural wealth, and utilisation does not mean changing completely, but rather managing, utilising, and preserving every potential, which is grouped into a tourist attraction.

Based on the Presidential Decree on the Spatial Planning for State Border Areas in Kalimantan which is currently in the finalization stage, the State Border on Kalimantan Island has designated 10 (ten) Economic Development Areas (EDA).<sup>3</sup> These are included:

1. Temajok-Aruk EDA with the Aruk gateway,
2. JagoiBabang EDA with the JagoiBabang gateway,
3. Entikong EDA with the Entikong gateway,
4. Jasa EDA with the Jasa gateway,
5. Nanga Badau EDA with the Nanga Badau gateway in West Kalimantan Province,
6. Long Apari-Long Pahangai EDA with the Lasan Tuyan gateway,
7. Long Nawang EDA with the Long Nawang gateway,
8. Long Midang EDA with the Long Midang gateway,
9. Simanggaris EDA with the Simanggaris gateway,
10. Nunukan-Sebatik EDA with the Nunukan gateway in East Kalimantan Province.

In accordance with the Presidential Regulation, the Economic Development Areas are developed on the fundamental standard, namely intended for maintaining national security and defense; and/or serving as centers or bases for defense. Meanwhile, other criteria are performed based on the following:

1. Ensuring the integrity of national territory,
2. Economic activities utilizing strategic natural resources,
3. Economic activities employing high technology,
4. Large-scale economic development in industries such as tourism,
5. Accelerating the realization of the national spatial structure,
6. Protecting national food production (food security),
7. Preserving and developing national customs and culture,
8. Protecting national resources,
9. Serving as nature reserves for the protection of flora and fauna that are endangered

---

<sup>1</sup> Yustina Octifanny and Dini Aprilia Norvyani, 'A Review of Urban Kampung Development: The Perspective of Livelihoods and Space in Two Urban Kampung in Pontianak, Indonesia' (2021) 107 *Habitat International* 102295.

<sup>2</sup> Fafurida Fafurida, YunastitiPurwaningsih, MulyantoMulyanto, and SuryantoSuryanto, 'Tourism Village Development: Measuring the Effectiveness of the Success of Village Development' (2023) 11(133) *Economies* 1-15.

<sup>3</sup> Presidential Regulation of the Republic of Indonesia Number 31 of 2015 on Spatial Planning for State Border Area in Kalimantan.

- or expected to become endangered,
- 10. Protecting water systems that cause annual national losses,
- 11. Protecting macro-climate conditions.

The economic condition of the Economic Development Areas in Kalimantan-Serawak-Sabah is generally still very weak, making these areas designated as underdeveloped regions.<sup>4</sup> This underdevelopment has a broad impact, especially in terms of economic disparity<sup>5</sup> between Indonesian and Malaysian citizens, resulting in negative effects such as illegal logging<sup>6</sup> and illegal migrant workers. Therefore, a proper development strategy is needed to address these economic disparities.

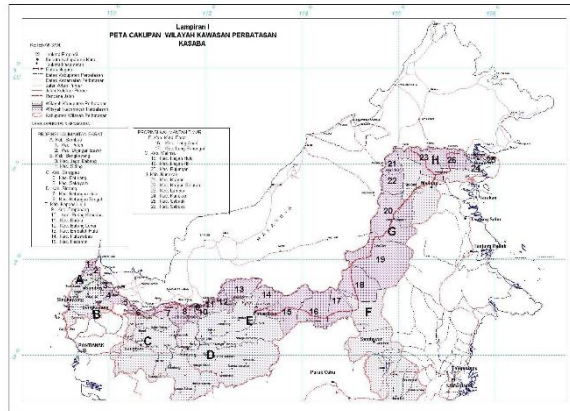


Figure 1. Border of Kalimantan-Serawak-Sabah (KASABA) Area

### Approach to EDA Development

The development of EDA is approached through three aspects:

1. Welfare Approach: This approach focuses on developing economic activities to improve the welfare of communities in border areas.<sup>7</sup>
2. Environmental Approach: This approach considers environmental sustainability and aims to minimize the impacts of development activities.<sup>8</sup>
3. Security Approach: This approach views border areas as adjacent to other countries, necessitating security measures to maintain the integrity of the Republic of Indonesia.<sup>9</sup>

<sup>4</sup> Alya Elita Sjoen, Pandu Adi Cakranegara, Zet Ena, MiftahorroziMiftahorrozi, and Eko Sutrisno, 'Management of the Country Border through the Export Development of Agricultural Commodities in the Indonesian Border' (2022) 11(2) *Jurnal Ekonomi* 1319-1324.

<sup>5</sup> Dian Wahyuningsih, Ani Yunaningsih, Muhammad SidikPriadana, Adi Wijaya, Dio Caisar Darma, and Siti Amalia, 'The Dynamics of Economic Growth and Development Inequality in Borneo Island, Indonesia' (2020) 1(67) *Journal of Applied Economic Sciences* 135-143.

<sup>6</sup> Noraini Zulkifli, Amer Fawwaz Mohd Yasid, Azrul Azlan Abdul Rahman, and Wan Norhasniah Wan Hussin, 'Early Survey on the Relocation of Capital City of Indonesia and its Impact towards East Malaysia Security' (2022) 5(6) *International Journal of Social Science And Human Research* 1994-2007.

<sup>7</sup> Syarif Redha Fachmi Al Qadrie, SyarifUsmulyadi, and Elyta Elyta, 'The Role of the State in the Acceleration of Economic Development in the Sambas Border Area West Kalimantan' (2023) 2(2) *International Journal of Education, Vocational and Social Science* 119-129.

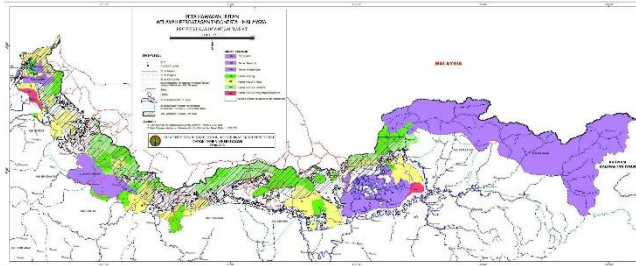
<sup>8</sup> Rina Kurniati, Retno Widjajanti, Santy Paulla Dewi, and Endah Kartika Syahri, 'Coastal Area Sustainability How the Components Impact the Economy of Community?' (2024) 12(2) *International Review for Spatial Planning and Sustainable Development* 293-317.

<sup>9</sup> Bellen AnggaraPratama, 'The Implementation of Economic Border Policing to Enhance Inclusive Economic Productivity' (2023) 1(2) *International Journal of Law Dynamics Review* 112-123.

[Type text]

### *Delineation of EDA Development*

In the context of developing the Temajok-Aruk EDA, several factors influence and serve as tools for delineation analysis. These factors include physical, social, historical, legal, economic, defense, and security aspects.<sup>10</sup> The analysis used for determining the delineation of the area is a descriptive method with an approach based on the homogeneity of activities in the EDA.



**Figure 2.** Forest Areas in the Indonesia – Malaysia Border Area

## **Materials and Methods**

### *Spatial Policy and Strategy for KASABA Border Area Development*

One of the regional development programs outlined in the National Development Program 1999-2004 is the border area development program. The goals of this program include:

1. Improving the living standards and welfare of the community.
2. Increasing the capacity to manage the potential of border areas.
3. Ensuring order and security in areas bordering other countries.

Meanwhile, the 2020-2024 regional development target will be accomplished by the implementation of five priorities, which are as follows:<sup>11</sup>

1. Development of key areas.
2. Advancement of superior sectors.
3. Transformation of urban areas.
4. Growth of underprivileged regions, border regions, rural regions, and transmigration.
5. Regional institutional and financial management.

### *Spatial Plan of West Kalimantan Province*

In the Spatial Plan policy of West Kalimantan Province, the Temajok-Aruk area is categorized as a specific area.<sup>12</sup> The policy for specific areas focuses on developing underdeveloped regions, particularly in border areas, to support national defense and security, as seen in the Temajok-Aruk EDA. Additionally, important attention is given to addressing critical land issues in protected areas and developing rapidly growing

<sup>10</sup> CB Herman Edyanto, 'Pengembangan Ekonomi Kawasan Perbatasan Negara di Kalimantan Barat' (2007) 9(3) *Jurnal Sains dan Teknologi Indonesia* 120-129.

<sup>11</sup> Bakri Siddiq, Muchlis Hamdi, Eko Budi Santoso, and Diah Puspita E, 'Implementation of the State Border Area Development Policy in Aruk Sambas District West Kalimantan Province' (2024) 4(4) *International Journal of Social Service and Research* 1123-1137.

<sup>12</sup> Syaiful Muazir and Horng-Chang Hsieh, 'An Application of Adaptive Network Urbanism: A Study Case from Border Area in Indonesia' (2021) 9(2) *International Review for Spatial Planning and Sustainable Development* 151-171.

and potential areas by optimizing the utilization of existing resources with an export orientation.

**Table 1.** KASABA Border Area Development Policy

Factor	Policy and Strategy
Space Utilization Patterns in Kalimantan Border Areas	Aruk EDA is being developed for several key sectors such as forestry, fisheries, agriculture, plantations, industry, and tourism. <sup>13</sup>
Spatial structure of the Kalimantan border area	The growth center system for the border area in Sambas Regency is determined based on the function of each town, as follows: <sup>14</sup> <ol style="list-style-type: none"> <li>a. National Activity Center: Aruk</li> <li>b. Regional Activity Centers: Singkawang, Sambas, and Temajok</li> <li>c. Local Activity Centers: Sajingan, Separan, Liku, Sekura, Galing, Pemangkat, Sentebang, Sejangkung, and Kaliau</li> <li>d. Towns in Sarawak: Semantan, Biawak, Teluk Melano</li> </ol>

Source: Spatial Policy and Strategy for Development of the KASABA Border Area, 2003

### *Spatial Plan of Sambas Regency*

The Spatial Plan for Sambas Regency serves as an extension of both regional development policies in West Kalimantan and national policies. It should be used as a guideline to coordinate and integrate sectoral development activities to achieve sustainable development.

### **Analysis of Strategic Areas**

Strategic areas are those that influence or are influenced by development policies and have the potential to interact with the Temajok-Aruk EDA. Based on the study, several strategic areas have been identified:

1. Biawak – Teluk Melano – Kuching: Located in Sarawak, Malaysia, this area has a significant market potential due to its higher per capita income compared to Sambas Regency. Biawak and Teluk Melano are entry points for trade into Sarawak.<sup>15</sup>
2. Natuna – Batam: These two developed areas (KAPET) to the west of Temajok Aruk EDA could serve as alternative markets for Temajok ArukEDA's products.<sup>16</sup>

<sup>13</sup>RusdionoRusdiono, and Adityo Darmawan Sudagung, 'The Implementation of One Village One Product (OVOP) Program in Sambas Regency' (2024) 8(1) Policy & Governance Review 58-74.

<sup>14</sup>Syarif Redha Fachmi Al Qadrie, SyarifUsmulyadi, and Elyta Elyta, *Op. Cit.*

<sup>15</sup>CB Herman Edyanto, *Op. Cit.*

<sup>16</sup>*Ibid.*

[Type text]

3. Sambas-Pontianak Corridor: This more developed area within West Kalimantan Province could be an internal market for Temajok ArukEDA's products.<sup>17</sup>
4. JagoiBabang in Bengkayang RegencyEDA: This EDA is the nearest to Temajok ArukEDA, and cooperation can be established due to similar key commodities, including agriculture, plantations, mining, and forestry.
5. Entikong EDA: This area has key sectors in industry, plantations, and agriculture, similar to Temajok Aruk EDA's focus on plantations.
6. Nanga Badau EDA: This area also focuses on plantations, forestry, mining, and agricultural industry, mirroring Temajok Aruk EDA's sectors.
7. Jasa EDA: With key sectors in plantations, forestry, and mining, this EDA is similar to Temajok Aruk EDA in its focus on these strategic sectors.

Based on the functions of the EDAs around Temajok Aruk, the following conclusions can be drawn that all EDAs have strategic sectors in common, particularly plantations (EDA of JagoiBabang, Entikong, Nanga Badau, and Jasa). The relationship between Temajok Aruk EDA and major cities like Biawak, Natuna-Batam, and Sambas is primarily trade and services.

The common functions among these EDAs lead to several consequences by illustrating that the exploitation of natural resources, particularly forests, is a major sector,<sup>18</sup> which poses environmental risks. Therefore, forestry management is necessary to minimize negative impacts.<sup>19</sup> Improvement of facilities and infrastructure for collecting forestry and plantation products is needed,<sup>20</sup> starting from inlets (storage warehouses, processing factories, etc.), roads, and outlets (ports, loading warehouses, etc.) in a coordinated manner.

Based on the Presidential Regulation on the Spatial Plan for Border Areas in Kalimantan, the hierarchy of settlement centers in West Kalimantan's border areas consists of - National Activity Center: Temajok-Aruk, JagoiBabang, Jasa, Entikong, Nanga Badau, Regional Activity Centers that covering Sambas and Temajok, Local Activity Centers covering Sajingan, Liku, Galing, Sejangkung, Sekura, Pemangkat.

## **Analysis of Internal Linkages**

### ***Inter-District Linkages***

The Sambas Regency Spatial Plan of 2001 consists of the district's spatial structure that is divided into four Development Areas, with the Temajo-Aruk area served by two WPs, namely WP Sekura and WP Galing. WP Sekura includes Teluk Keramat and Paloh subdistricts, with Sekura town as the development center and Liku

---

<sup>17</sup>SyaifulMuazir and Horng-Chang Hsieh, 'Urban Network in Strategic Areas in Indonesia Case Study: Sambas Regency, West Kalimantan' (2019) 19(2) *Journal of Design and Built Environment* 14-29.

<sup>18</sup>WiyatmiWiyatmi, Else Liliani, Esti Swatika Sari, and Mawar Safei, 'Deforestation in Indonesian and Malaysian Novels: When Wild Forests are Destroyed by Anthropocentrism' (2022) 24(1) *K@ta: A Biannual Publication on the Study of Language and Literature* 29-39.

<sup>19</sup>Syarifuddin Hasyim, Razali Abdullah, and Husaini Ibrahim 'Forest Damage and Preservation through Forest Resources Management in Indonesia' (2021) 86(5) *GeoJournal* 2183-2189.

<sup>20</sup> Sandy Leo, JatnaSupriatna, Kosuke Mizuno, and Chris Margules 'Indigenous Dayak Iban customary perspective on sustainable forest management, West Kalimantan, Indonesia' (2022) 23(1) *Biodiversitas* 424-435.

town, Tanah Hitam village, and Semantir village as sub-centers. WP Galing includes Galing and Sajingan Besar subdistricts, with Galing town as the development center and Kaliau town and Senatab village as sub-centers. Liku town in Paloh subdistrict serves administrative functions,<sup>21</sup> while Kaliau town shares similar functions, acting as administrative centers and economic drivers for Temajo in Paloh and Aruk in Sajingan Besar.

### *Village-Town Linkages*

Paloh subdistrict consists of six main villages, including Sebusus. Other villages fall under order IV. The nearest hamlet to Temajo is Camar Bulan,<sup>22</sup> while Aruk is closest to Aping and Beruang hamlets.<sup>23</sup> In Sarawak, Aruk village aligns with Biawak village, and Temajo aligns with Telok Melano village.

## **Economic Analysis Results and Discussion for EDA**

**Table 2.** Gross Regional Domestic Product at Current Prices

City/District	(in Million Rupiah)		
	2021	2022	2023
West Kalimantan	231 321 163,28	255 797 278,97	274 468 581,16
Sambas	22 290 194,08	24 415 408,15	26 202 781,52
Bengkayang	9 318 527,83	10 324 506,41	11 146 260,69
Landak	11 614 172,69	12 775 764,64	13 684 302,96
Mempawah	9 084 515,84	9 955 619,85	10 714 007,49
Sanggau	21 678 774,37	23 847 058,94	24 529 321,36
Ketapang	30 911 315,92	34 315 187,00	35 249 162,02
Sintang	15 749 078,86	17 330 129,01	18 586 857,69
Kapuas Hulu	11 071 935,29	12 187 100,86	13 140 864,00
Sekadau	7 132 689,94	7 884 125,76	8 506 335,03
Melawi	5 626 604,42	6 176 540,85	6 644 398,89
North Kayong	4 533 731,24	4 980 741,54	5 375 793,41
Kubu Raya	31 231 417,06	35 275 464,64	38 323 798,78
Pontianak	40 200 359,04	44 320 310,50	47 885 235,55
Singkawang	10 877 846,70	11 931 618,93	12 899 269,00

From 2001 to 2023, the agricultural sector contributed the largest share to the GRDP distribution, at 39.98% (ADHB) and 32.15% (ADHK 1993). This was followed by the trade, hotel, and restaurant sector, contributing 29.85% (ADHB) and 30.27% (ADHK 1993). The manufacturing sector contributed 10.90% (ADHB) and 16.55% (ADHK 1993). Other sectors, such as mining and quarrying, electricity and water supply, construction, transportation, finance, rental, business services, and other

<sup>21</sup>SyaifulMuazir and Horng-Chang Hsieh, '(Adaptive) Networks in strategic areas in Indonesia' (2016) 227 *Procedia: Social and Behavioral Sciences* 202–209.

<sup>22</sup>Sabahan and Puput Erwandi, *Desa Wisata Temajuk: Pesona Di Ujung Negeri* (Penerbit Adab: Indramayu, 2022) 54.

<sup>23</sup>Mita Noveria, *Kedaulatan Indonesia di Wilayah Perbatasan: Perspektif Multidimensi* (Yayasan Pustaka Obor Indonesia: Jakarta, 2017) 40.

[Type text]

services, contributed less than 10%.

**Table 3.** Sambas Regency Spatial Planning Policy

No.	Sub Development	Policy
1.	Layout of service centers	<p>First-Order Cities (Main Centers):</p> <ol style="list-style-type: none"><li>a. Sambas City: Serves the subdistricts of Sambas, Sejangkung, Teluk Keramat, Paloh, Sajingan Besar, Galing, and Subah.</li><li>b. Pemangkat: Serves the subdistricts of Pemangkat, Selakau, Tebas, and Jawai.</li></ol> <p>Second-Order Cities:</p> <ol style="list-style-type: none"><li>a. Tebas City: Serves the subdistrict of Tebas and several villages in Jawai.</li><li>b. Sekura City: Serves the subdistrict of Sekura and several villages in Paloh.</li><li>c. Galing City: Serves the subdistrict of Galing and several villages in Sajingan Besar.</li></ol> <p>Third-Order Cities:</p> <ol style="list-style-type: none"><li>a. Selakau, Sentabang, Sejangkung, Liku, Kaliau, and Balai Gemuruh: Each serves its respective subdistrict.</li></ol>
2.	Service center functions	<p>Sambas:</p> <ol style="list-style-type: none"><li>a. Functions as a center of government</li><li>b. A service center</li><li>c. A regional transportation hub</li><li>d. A collection and distribution center at the subdistrict level</li><li>e. The center of the subdistrict government</li></ol> <p>Galing:</p> <ol style="list-style-type: none"><li>a. Functions as a regional transportation hub</li><li>b. A collection and distribution center at the subdistrict level</li><li>c. The center of the subdistrict government</li></ol> <p>Sejangkung:</p> <ol style="list-style-type: none"><li>a. Functions as the center of subdistrict government</li></ol>
3.	Regional pattern	<p>WP Pemangkat:</p> <ol style="list-style-type: none"><li>a. Center: Pemangkat</li><li>b. Covers the subdistricts of Selakau, Pemangkat, Tebas, and Jawai</li></ol>



## WP Sambas:

- a. Center: Sambas
- b. Covers the subdistricts of Sambas, Sejangkung, and Subah

## WP Sekura:

- a. Center: Sekura
- b. Covers the subdistricts of Teluk Keramat and Paloh

## WP Galing:

- a. Center: Galing
- b. Covers the subdistricts of Galing and Sajingan Besar

**Table 4.** Gross Regional Domestic Product (GRDP) Growth Rate Series 2010 by Business Field (in Percent)

Business Field Category (2010 Series)	Cumulative Growth Rate					Growth Rate Q to Q					Growth Rate Y to Y				
						2024									
	Quarter 1	Quarter 2	Quarter 3	Quarter 4	Annual	Quarter 1	Quarter 2	Quarter 3	Quarter 4	Annual	Quarter 1	Quarter 2	Quarter 3	Quarter 4	Annual
Agriculture, Forestry and Fisheries	4,11	3,78	.	.	.	4,87	-8,73	.	.	.	4,11	3,42	.	.	.
Mining and Quarrying	-9,64	-5,56	.	.	.	-3,19	3,62	.	.	.	-9,64	-1,26	.	.	.
Processing Industry	4,67	4,33	.	.	.	-5,16	1,34	.	.	.	4,67	3,99	.	.	.
Electricity, Gas Supply	7,13	7,84	.	.	.	5,54	1,55	.	.	.	7,13	8,54	.	.	.
Water Supply, Waste Management, Waste and Recycling	7,95	7,35	.	.	.	-1,16	0,12	.	.	.	7,95	6,76	.	.	.

[Type text]

Construction	Wholesale and Retail Trade, and Car and Motorcycle Repair	Transportation and Warehousing	Provision of Accommodation and Food and Beverages	Information and Communication	Financial Services	Real Estate	Company Services	Government Administration, Defense, and Compulsory Social Security
5,75	5,98	2,09	8,00	5,62	5,92	9,75	2,10	6,77
5,80	3,03	6,56	9,27	7,95	4,13	6,89	9,27	13,39
·	·	·	·	·	·	·	·	·
·	·	·	·	·	·	·	·	·
·	·	·	·	·	·	·	·	·
·	·	·	·	·	·	·	·	·
·	·	·	·	·	·	·	·	·
2,76	9,44	14,99	1,12	1,15	0,76	2,71	9,56	4,85
-12,45	0,73	-4,00	1,05	3,64	4,24	6,75	-8,65	7,08
·	·	·	·	·	·	·	·	·
·	·	·	·	·	·	·	·	·
·	·	·	·	·	·	·	·	·
·	·	·	·	·	·	·	·	·
5,78	4,55	4,12	8,63	6,77	5,02	8,32	5,40	9,90
5,80	3,03	6,56	9,27	7,95	4,13	6,89	9,27	13,39

Education Services	9,45	8,92	-	-	-	1,36	11,24	-	-	-	9,45	8,44	-	-	-
Health Services and Social Activities	14,51	7,95	-	-	-	-3,75	-0,15	-	-	-	14,51	2,10	-	-	-
Other Services	6,15	6,67	-	-	-	-0,45	1,48	-	-	-	6,15	7,19	-	-	-
GRDP	4,98	4,87	-	-	-	-0,51	1,37	-	-	-	4,98	4,76	-	-	-
<b>Total</b>	-	-	-	-	-	-	-	-	-	-	-	-	-	-	-

The LQ (Location Quotient) index can be used to identify export-oriented potential sectors in Sambas Regency.<sup>24</sup> Sectors with an LQ greater than 1 include agriculture, trade, restaurants, and hotels. Theoretically, sectors with an LQ value greater than 1 are considered regional base sectors expected to be further developed and have export potential. For instance, in the agricultural sector, commodities like rubber, coconut, and rice in the food crop sub-sector have potential. The trade, restaurant, and hotel sectors also have significant potential for development in Sambas Regency.<sup>25</sup>

The ICOR (Incremental Capital-Output Ratio) indicates the relative economic growth rate resulting from investments.<sup>26</sup> An ICOR value between 3-4 is considered to indicate good investment productivity. A higher ICOR value suggests inefficiency in investment usage.<sup>27</sup> For example, this year, the investment needed to achieve a GRDP of IDR 1,976,492.60 million with an economic growth rate of 9.09% was IDR 718,652.71 million, or about 36% of the projected GRDP value.

Assuming Sambas Regency's economy will grow rapidly in the future, supported by regional autonomy, the economic growth rate is expected to increase to around 9.09% as before the economic crisis. If the economic recovery process is slow, the growth rate is estimated to be around 5.23%. In an optimistic scenario, where economic recovery is smooth and rapid, the growth rate could reach approximately 13.83%. These assumptions help project the investment value up to 2010.

Based on the Shift and Share analysis, sectors with a positive differential shift value include agriculture, manufacturing, trade, hotels, and restaurants, as well as finance,

<sup>24</sup>DeaTrisna, 'Analisis Sektor Unggulan di Provinsi Kalimantan Barat Berdasarkan Metode Klassen' (2023) 1(2) *Ekodestinas* 114-123.

<sup>25</sup>Chong Shin and James T. Collins, 'From a Market to an Urban Centre: Sekadau in West Kalimantan, Indonesia' (2023) 18(1) *Histories of People and Place* 25-42.

<sup>26</sup>Eka Sastra, Didin S. Damanhuri, Noer Azam Achsani, and Ahmad Erani Yustika, 'Impact of Agricultural Sector Investment Development on National Economic Output' (2021) 26*Technium: Social Sciences Journal* 466-474.

<sup>27</sup>Sakib Bin Amin, Farhad Taghizadeh-Hesary, Foqoruiddin Al Kabir, and Farhan Khan, 'Nexus between Energy Intensity and Capital-Output Ratio: A Holistic Approach' (2023) 34(7) *Energy & Environment* 2721-2739.

[Type text]

leasing, and business services. These sectors exhibit competitive performance, meaning their development rate is higher than the same sectors at the provincial level and relatively better compared to other regions. Meanwhile, sectors with a positive proportional shift value, indicating faster development compared to West Kalimantan Province, include mining and quarrying, electricity, gas, and water supply, construction, transportation, and communication, and services sectors. Conversely, sectors with a negative proportional shift value are growing slower than the same sectors in West Kalimantan Province.

The LQ analysis indicates that the base sector in Sambas Regency is agriculture, with a multiplier effect coefficient of 12.16. This means that for every income value in the agricultural sector of IDR 1, an additional income of IDR 12.16 is generated in the service sector.

### **Development Scenario for Temajok-Aruk EDA**

Based on the research conducted in the Temajok-Aruk area, a development scenario for Temajok-Aruk EDA has been formulated: "Temajok-Aruk EDA as a trading center," supported by two node settlement centers and two corridor settlement centers (moderate model), which implies:<sup>28</sup>

1. Temajok-Aruk EDA will be developed as a national activity center in Sambas Regency, meaning development concentration will occur at two points.
2. The economic growth rate in the area is relatively fast, estimated at 2.9% per year.
3. Larger investments are required to support the development of settlement centers and infrastructure.
4. Better land transportation is needed, improving the quality and quantity of connections between Temajok-Aruk EDA and other parts of Sambas Regency and with Sematan and Biawak in Sarawak, Malaysia.
5. Improved equitable development due to the addition of service centers, namely settlement centers in Temajo and Liku, corridor settlement centers in Galing Sejangkung, and the Aruk Industrial Area.
6. Environmental balance must be maintained as land use changes increase due to the development of settlement centers and urban activities.

### **Policies and Strategies for Developing Temajok-Aruk EDA**

The development policies for Temajok-Aruk EDA outline long-term goals as a reference framework for future actions and decision-making while strategies support each policy through specific and measurable activities. To develop the policies and strategies for Temajok-Aruk EDA, the following considerations are necessary:

1. Development must consider the conditions of Temajok-Aruk EDA, focusing on valuable urban forms and the cultural conditions of the local community.
2. Encourage urban expansion by building new housing in four settlement centers while paying attention to protected areas and transmigration settlements.

---

<sup>28</sup>CB Herman Edyanto, *Op. Cit.*

3. New development locations and settlements must be supported by infrastructure development, including public services, transportation, water, electricity, and communication.
4. Develop an innovative economy based on potential sectors (such as oil palm) and industry as the foundation of Temajok-ArukEDA's economy.
5. Surrounding areas should be developed as buffer zones that produce raw materials for production and as environmentally valuable areas (protected areas).
6. Surrounding cities should be developed as integrated settlement areas to make infrastructure provision more efficient and effective, especially transportation and utilities for public services.
7. Spatial Planning for Temajok-ArukEDA should emphasize policies focusing on the growth of the main city supported by regional transportation. Growth areas are designed to function as primary urban centers, transforming rural functions into urban ones, and providing housing for new migrants while maintaining environmental balance. Growth centers should be designed to prevent development from encroaching on protected areas.
8. Growth should be managed to create a city form that provides efficient services, making infrastructure provision, especially transportation, a key element in supporting the development process.
9. Long-term growth of Temajok-Aruk EDA should be supported by measures to minimize environmental pressures, especially in areas around the city center, and to help the productivity of buffer zones (rural areas).
10. Developing the border area's economy with attention to environmental balances should remain within the framework of the Republic of Indonesia. Better border management and security are key factors in developing Temajok-Aruk EDA.

**Table 6.** LQ Sambas Regency Compared with West Kalimantan Province for Several Sectors in 2024

No.	Sector	Sector Role (%)		LQ
		West Kalimantan	Sambas Regency	
1.	Agriculture	24,06	32,15	-
2.	Mining and Digging	1,49	0,19	0,13
3.	Development Industry	18,84	16,55	0,88
4.	Electricity, gas, and water	1,00	0,41	0,41
5.	Building	6,24	2,13	0,34
6.	Trade, Restaurant, and Hotel	19,46	30,27	1,56
7.	Logistic and Communication	10,35	6,23	0,60
8.	Finance, rental, and Corporate Services	7,00	5,97	0,85
9.	Services	11,57	6,09	0,53

Source: Regional Income of Sambas Regency District 2001-2024

## Conclusion

[Type text]

Economic access for local community is really influenced by Economic development areas that require a development strategy includes the creation of node-pattern cities. This involves:

1. Liku City Cluster: Serving as a center for service activities, supported by both inlet and outlet infrastructure, and regional facilities such as ports, improved roads and bridges, and electrical infrastructure.
2. Galing City Cluster: Functioning as a residential area, supported by improvements in roads and bridges.
3. Sejangkung City Cluster: Acting as a center for light industry, supported by improvements in roads and bridges, and benefiting from its proximity to Sambas City.
4. Kaliau City Cluster: Functioning as a residential area, supported by improvements in roads and bridges, as well as enhancements in telecommunications systems.

Economic policy consist of also other strategies include developing cities around state border covering:

1. Temajo-Liku City Cluster: Serving as a center for service activities, industry, marine tourism, agriculture, government, settlement, and national defense.
2. Galing-Sejangkung City Cluster: Acting as a center for settlement, agriculture, and light industry.
3. Kaliu-Aruk City Cluster: Functioning as a center for service activities, industry, national defense, forest conservation, agriculture, and settlement.

Local communities for economic access is supported as well by the EDA (Economic Development Center) needs to be supported by various plans to structure its spatial planning, which include:

1. Transportation System Structure Plan
2. Telecommunications Network Plan
3. Provision of Facilities and Infrastructure Plan

## **Declaration of Conflicting Interests**

The authors declared no potential conflicts of interest with respect to the research, authorship, and/or publication of this article.

## **Funding**

The authors received no financial support for the research, authorship, and/or publication of this article.

## **References**

Alya Elita Sjoen, Pandu Adi Cakranegara, Zet Ena, Miftahorrozi Miftahorrozi, and Eko Sutrisno, 'Management of the Country Border through the Export Development of Agricultural Commodities in the Indonesian Border' (2022) 11(2) *Jurnal Ekonomi* 1319-1324.

Bakri Siddiq, Muchlis Hamdi, Eko Budi Santoso, and Diah Puspita E, 'Implementation

- of the State Border Area Development Policy in Aruk Sambas District West Kalimantan Province' (2024) 4(4) *International Journal of Social Service and Research* 1123-1137.
- Bellen AnggaraPratama, 'The Implementation of Economic Border Policing to Enhance Inclusive Economic Productivity' (2023) 1(2) *International Journal of Law Dynamics Review* 112-123.
- CB Herman Edyanto, 'Pengembangan Ekonomi Kawasan Perbatasan Negara di Kalimantan Barat' (2007) 9(3) *Jurnal Sains dan Teknologi Indonesia* 120-129.
- Chong Shin and James T. Collins, 'From a Market to an Urban Centre: Sekadau in West Kalimantan, Indonesia' (2023) 18(1) *Histories of People and Place* 25-42.
- DeaTrisna, 'Analisis Sektor Unggulan di Provinsi Kalimantan Barat Berdasarkan Metode Klassen' (2023) 1(2) *Ekodestinas* 114-123.
- Dian Wahyuningsih, Ani Yunaningsih, Muhammad SidikPriadana, Adi Wijaya, Dio Caisar Darma, and Siti Amalia, 'The Dynamics of Economic Growth and Development Inequality in Borneo Island, Indonesia' (2020) 1(67) *Journal of Applied Economic Sciences* 135-143.
- Eka Sastra, Didin S. Damanhuri, Noer Azam Achsani, and Ahmad Erani Yustika, 'Impact of Agricultural Sector Investment Development on National Economic Output' (2021) 26 *Technium: Social Sciences Journal* 466-474.
- Fafurida Fafurida, YunastitiPurwaningsih, MulyantoMulyanto, and SuryantoSuryanto, 'Tourism Village Development: Measuring the Effectiveness of the Success of Village Development' (2023) 11(133) *Economies* 1-15.
- Mita Noveria, *Kedaulatan Indonesia di Wilayah Perbatasan: PerspektifMultidimensi* (Yayasan Pustaka Obor Indonesia: Jakarta, 2017)
- Noraini Zulkifli, Amer Fawwaz Mohd Yasid, Azrul Azlan Abdul Rahman, and Wan Norhasniah Wan Hussin, 'Early Survey on the Relocation of Capital City of Indonesia and its Impact towards East Malaysia Security' (2022) 5(6) *International Journal of Social Science And Human Research* 1994-2007.
- Presidential Regulation of the Republic of Indonesia Number 31 of 2015 on Spatial Planning for State Border Area in Kalimantan.
- Rina Kurniati, Retno Widjajanti, Santy Paulla Dewi, and Endah Kartika Syahri, 'Coastal Area Sustainability How the Components Impact the Economy of Community?' (2024) 12(2) *International Review for Spatial Planning and Sustainable Development* 293-317.
- RusdionoRusdiono, and Adityo Darmawan Sudagung, 'The Implementation of One Village One Product (OVOP) Program in Sambas Regency' (2024) 8(1) *Policy & Governance Review* 58-74.
- Sabahan and Puput Erwandi, *Desa WisataTemajuk: Pesona Di Ujung Negeri* (Penerbit Adab: Indramayu, 2022)
- Sakib Bin Amin, Farhad Taghizadeh-Hesary, Foqoruiddin Al Kabir, and Farhan Khan, 'Nexus between Energy Intensity and Capital-Output Ratio: A Holistic Approach'

[Type text]

(2023) 34(7) *Energy & Environment* 2721-2739.

Sandy Leo, JatnaSupriatna, Kosuke Mizuno, and Chris Margules 'Indigenous Dayak Iban customary perspective on sustainable forest management, West Kalimantan, Indonesia' (2022) 23(1) *Biodiversitas* 424-435.

SyaifulMuazir and Horng-Chang Hsieh, '(Adaptive) Networks in strategic areas in Indonesia' (2016) 227 *Procedia: Social and Behavioral Sciences* 202–209.

SyaifulMuazir and Horng-Chang Hsieh, 'An Application of Adaptive Network Urbanism: A Study Case from Border Area in Indonesia' (2021) 9(2) *International Review for Spatial Planning and Sustainable Development* 151-171.

SyaifulMuazir and Horng-Chang Hsieh, 'Urban Network in Strategic Areas in Indonesia Case Study: Sambas Regency, West Kalimantan' (2019) 19(2) *Journal of Design and Built Environment* 14-29.

Syarif Redha Fachmi Al Qadrie, SyarifUsmulyadi, and Elyta Elyta, 'The Role of the State in the Acceleration of Economic Development in the Sambas Border Area West Kalimantan' (2023) 2(2) *International Journal of Education, Vocational and Social Science* 119-129.

Syarifuddin Hasyim, Razali Abdullah, and Husaini Ibrahim 'Forest Damage and Preservation through Forest Resources Management in Indonesia' (2021) 86(5) *GeoJournal* 2183-2189.

WiyatmiWiyatmi, Else Liliani, Esti Swatika Sari, and Mawar Safei, 'Deforestation in Indonesian and Malaysian Novels: When Wild Forests are Destroyed by Anthropocentrism' (2022) 24(1) *K@ta: A Biannual Publication on the Study of Language and Literature* 29-39.

Yustina Octifanny and Dini Aprilia Norvyani, 'A Review of Urban Kampung Development: The Perspective of Livelihoods and Space in Two Urban Kampung in Pontianak, Indonesia' (2021) 107 *Habitat International* 102295.